



Luke Powell, Alan Garza, David Kinsbrunner

RAIN FOREST

METEOROLOGIST

The weather is rainy, warm, and moist. There are no seasons.

The weather makes animals that need warm air move to this climate because it is never burning hot or freezing cold. Snakes and poison dart frogs are two examples of animals that need warm weather to live.



METEOROLOGIST 2

- ✘ The weather is warm, moist, and wet which makes it very hard to do things like sports, build, or use transportation vehicles. Flooding is a big factor in the killing of lots of animals, but we hold the prize (gov. of Brazil) for killing lots of animals and plants.
- ✘ The weather is very different from Georgia's climate. In the rainforest it is usually raining in some form or fashion. In Georgia it could take a week to rain. Also, we have seasons in Georgia like cold, warm, and hot weather. In the rainforest it is always warm, never cold.

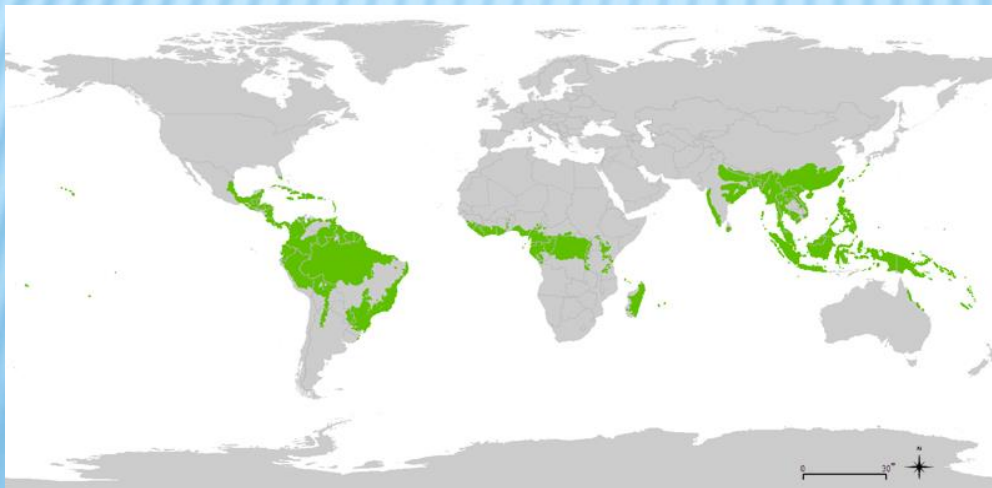
GEOLOGIST/SOCIOLOGIST

- ✘ Rainforests are forests characterized by high rainfall, with definitions setting minimum normal annual rainfall between 68-78 inches.
- ✘ Brazil, Bolivia, Cameroon, Central African Republic, Ecuador, Gabon, Guyana, India, Laos, Malaysia, Mexico, Myanmar, Papua New Guinea, Vietnam, Republic of Congo, Suriname, and Venezuela.
- ✘ There are over 50,000,000 different tribes living in world rainforests. These people depend on the rainforest for survival; they need to gather fruit, which grow on trees in the rainforest. They need the animals that live in the rainforest to hunt and the fish that are found in streams and rivers, for fishing. The tribe members travel by foot. Some of the major tribes living in world rainforests are The Yanomami, The Huli, and The Pygmy tribe.



GEOLOGIST/SOCIOLOGIST 2

- ✘ People live in my rainforest because there are a lot of fruit that grows from the trees. They also have streams for drinking water
- ✘ The people that live in the rainforest hunt and find food and try to survive. We will just get in our car and drive to get food from a store.
- ✘ The treats that they will have are finding food. They will also have bad weather like rain leading to floods. Also some animals can attack them while they are sleeping or playing.



GREEN = RAINFOREST

ZOOLOGIST

Animals: Poison Dart Frog, Chameleon, Gorilla, Andoconda.

Poison Dart Frog: they use bright colors to warn predators that they are poisonous.

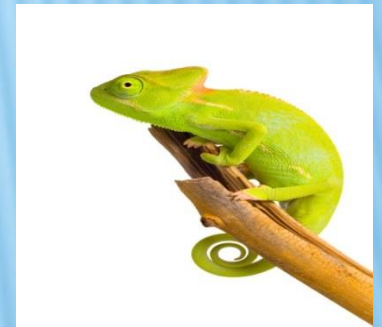
Andoconda: they use camouflage to hunt and kill their pray.

Chameleon: they have the ability to change colors and blend in with their surroundings.

Gorilla: they have big toes to help them eat.

These animals can hurt humans very bad.

Yes, because the animals in the food chain balance out.



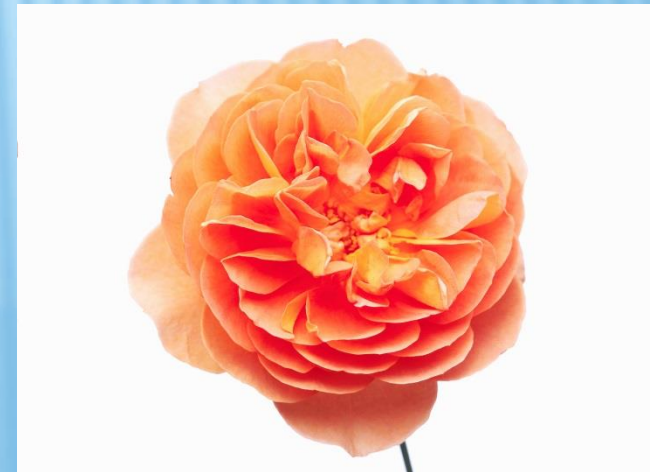
BOTANIST

A few of the plants that live in the rainforest are Mammosa, Walking Palms, Lemon Aspens, Cassowary, Potato Vine.

The adaptations that plants of the rainforest use are thicker bark to help limit moisture and evaporation. Epiphytes are plants that grow on other plant's bark. Mangroves trap nutritious organic matter. Buttresses provide extra stability.

These plants don't look like the plants from my neighborhood; have different adaptations needed for the biome for the rainforest.

Some of the plants help with medicine like cancer, sinus infections, and other diseases.



CITATIONS

- × www.weather.com
- × <http://earthobservatory.nasa.gov/Experiments/Biome/>
- × <http://www.mbgnet.net/>
- × <http://enchantedlearning.com/biomes/>
- × Cobb Digital Library
- × rainforest-australia.com/Cassowary_Fruit_1.gif
- × Microsoft Office Clip Art

- × Meteorologist- David
- × Geologist/Sociologist- Alan
- × Zoologist- Luke
- × Botanist- Luke

THE END!!!!!!