

THE RAINFOREST



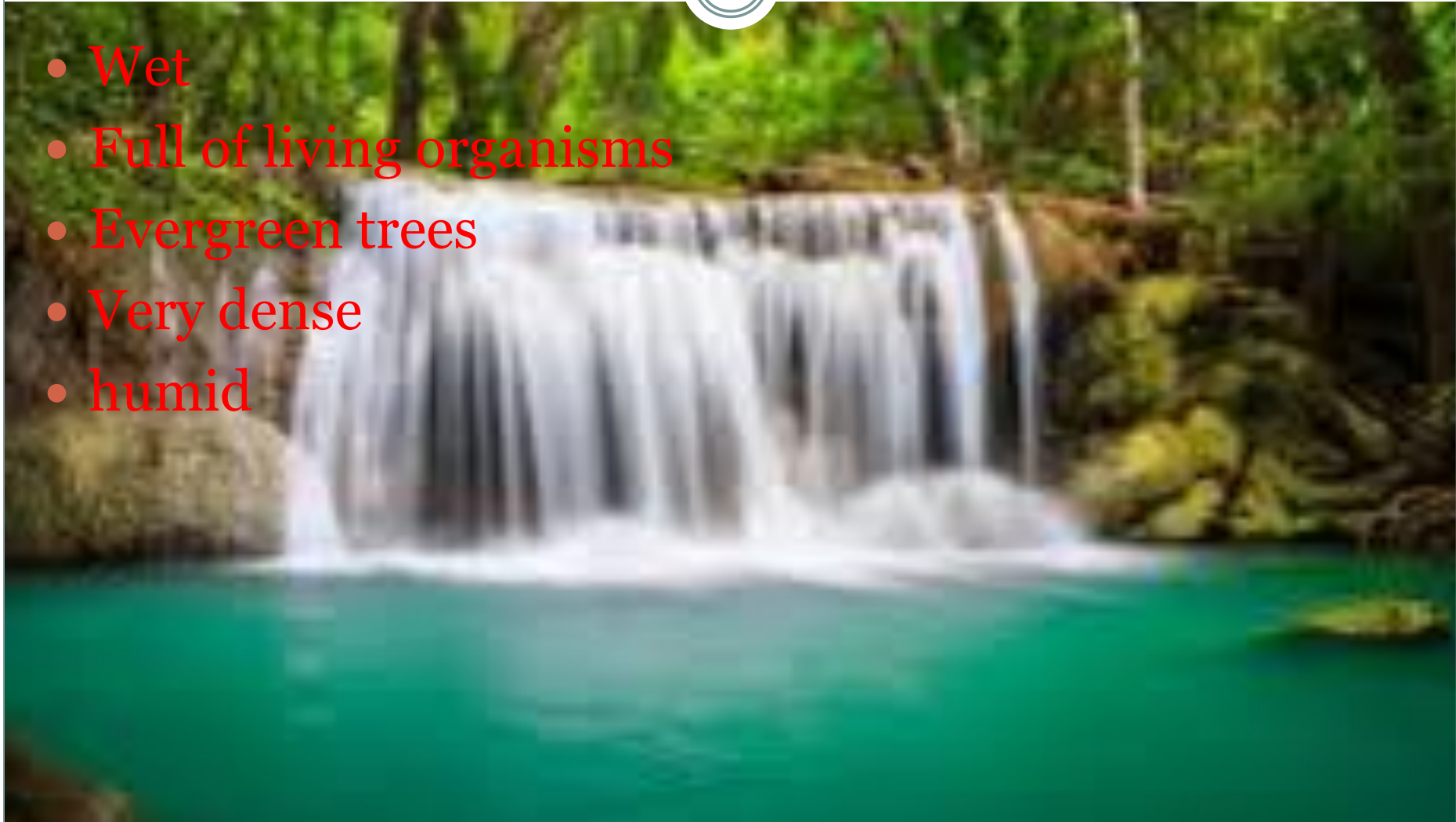
Geologist/Sociologist



Major Characteristics of the Rainforest



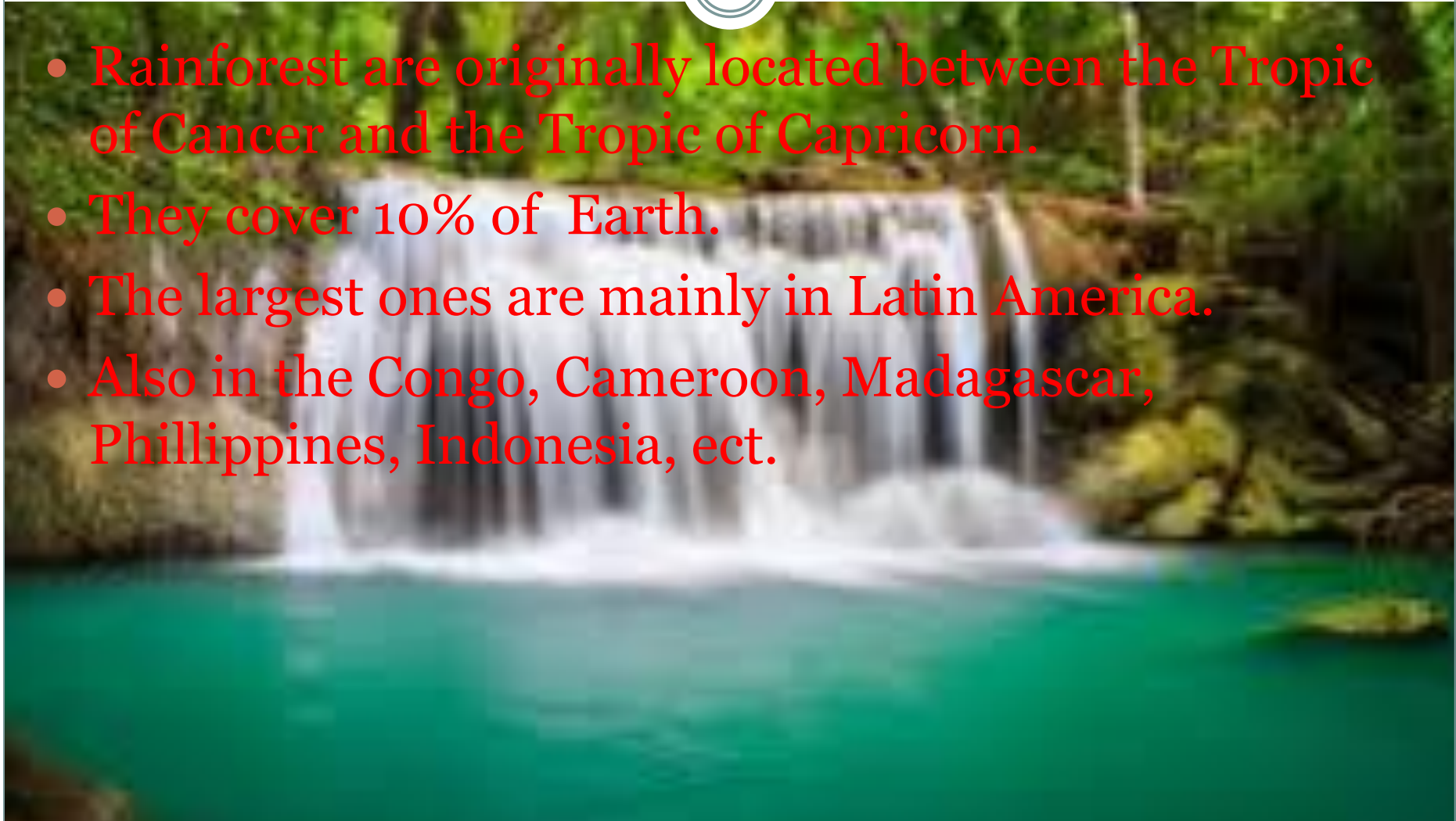
- Wet
- Full of living organisms
- Evergreen trees
- Very dense
- humid



Location of Rainforest



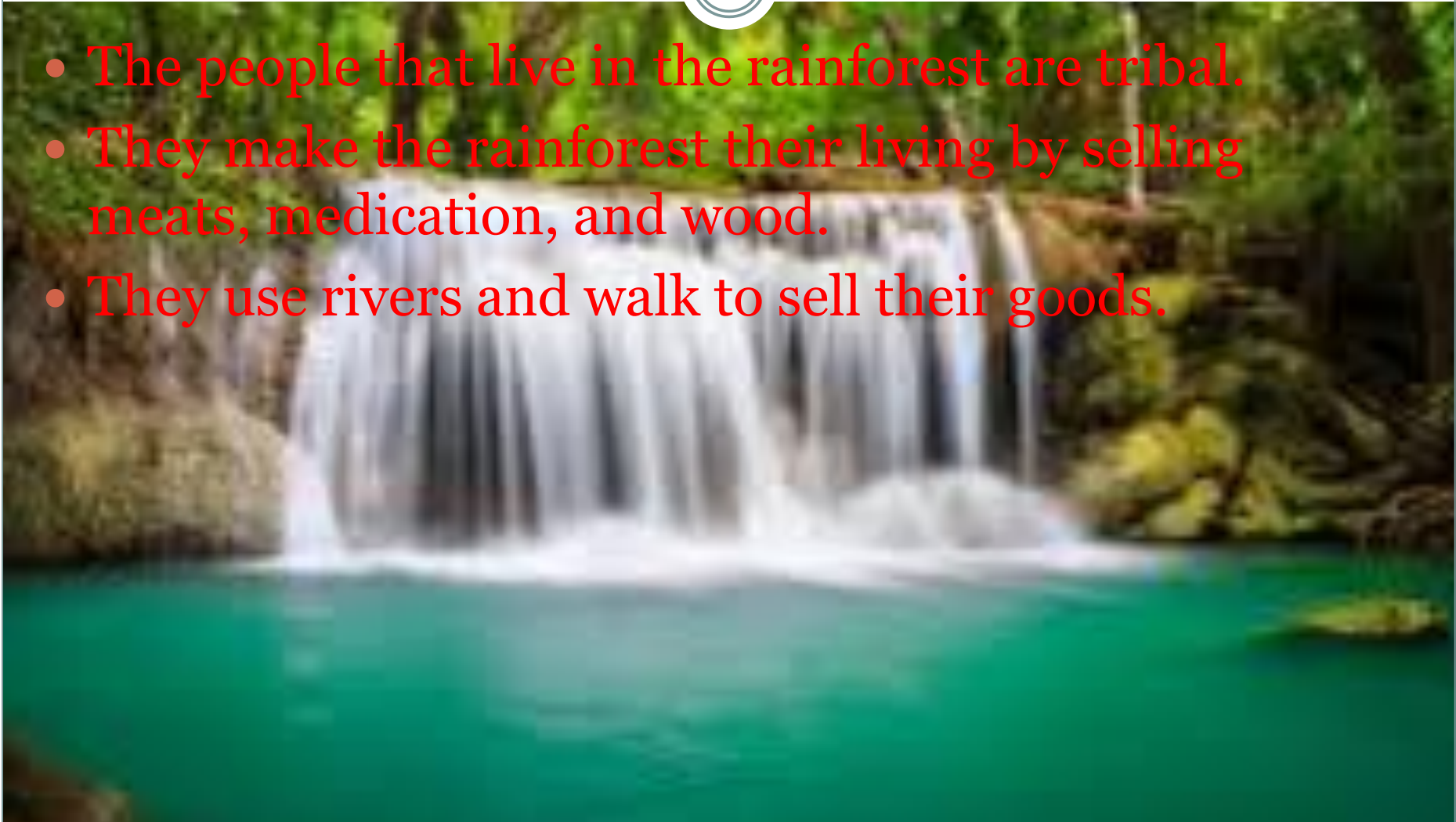
- Rainforests are originally located between the Tropic of Cancer and the Tropic of Capricorn.
- They cover 10% of Earth.
- The largest ones are mainly in Latin America.
- Also in the Congo, Cameroon, Madagascar, Philippines, Indonesia, etc.



People that Live in the Rainforest



- The people that live in the rainforest are tribal.
- They make the rainforest their living by selling meats, medication, and wood.
- They use rivers and walk to sell their goods.



Things Humans Have to do to live in the Rainforests



- They must take precautions on the animals that live there and some plants.



HOW DO THE PEOPLE DIFFER FROM PEOPLE FROM OUR NIEGHBORHOOD



- It is different because we don't have to hunt for our food.
- They don't have internet



Threats on the Rainforest



- People are cutting down all the trees in the rainforest.



BOTANIST



What plants are in the Rainforest?



- Drip leaves, Buttress roots, coconut trees, Kapok Trees, and Emergent trees



How do these plants adapt to the environment

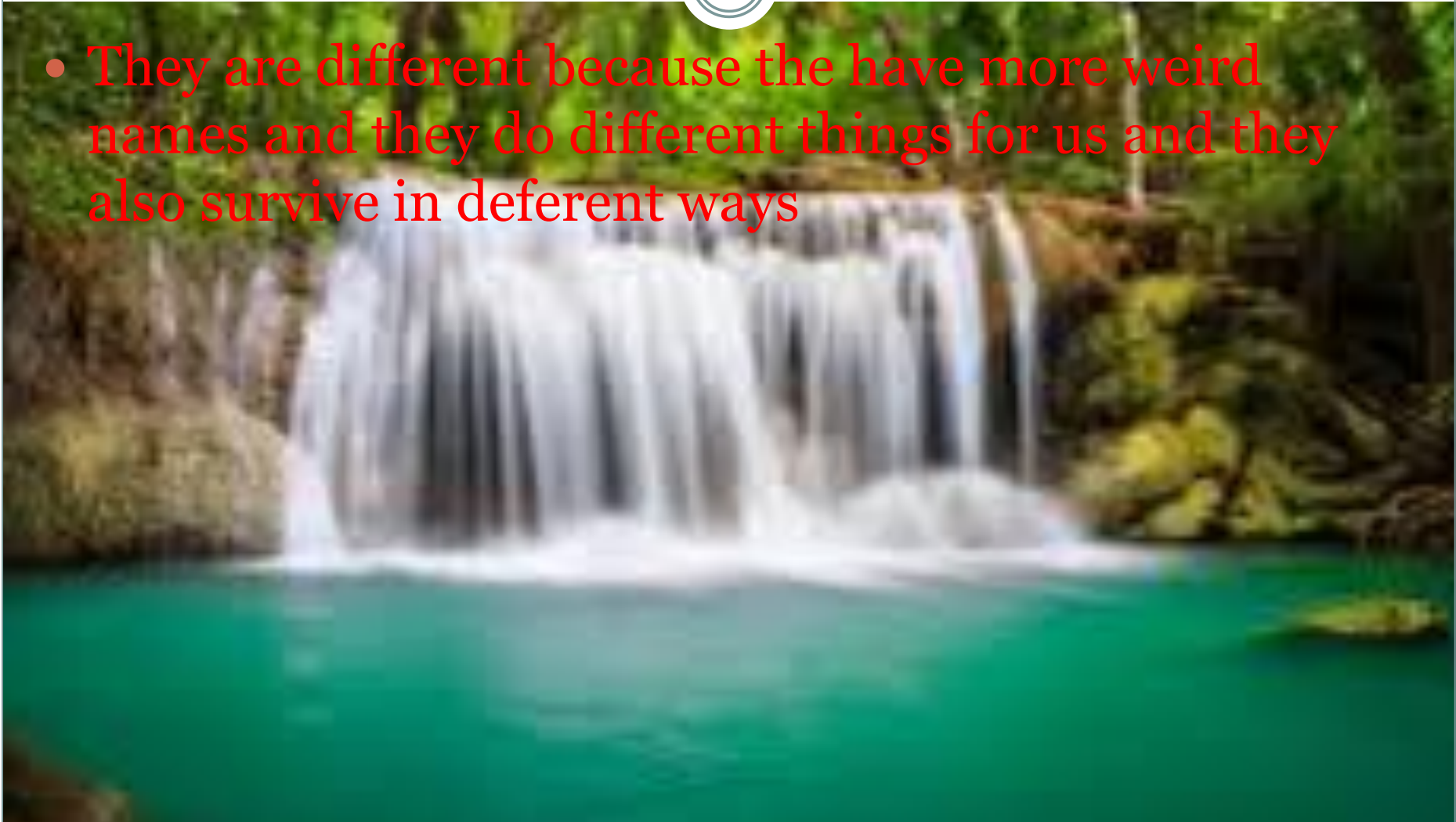


- Drip leaves cope with rainfalls.
- Coconut Tree spreads its seeds and the grow a variety of conditions allowing it to become a pan-tropical species
- Buttress Roots makes tall trees stable in the damp ground
- Kapok Trees its spines protect it from predators
- Lianas adapt by having their roots in the ground and climbing high up into a tree

How are the plants different than the ones in our neighborhood?



- They are different because they have more weird names and they do different things for us and they also survive in different ways



Are the plants important



- Every plant is important because they all play a part in the circle of life



What kinds of threats does the weather pose for your biome and its inhabitants?

- Drought can affect the forest by weakening the system to the point where you can't suspect other things like fire and disease.
- Cutting down trees is a threat because some animals live in those trees and because some eat leaves and they won't have anything to eat because of that.
- Fire is also a threat because it can ruin the animals' habitats and homes.

Meteorologist



The weather in the rainforest

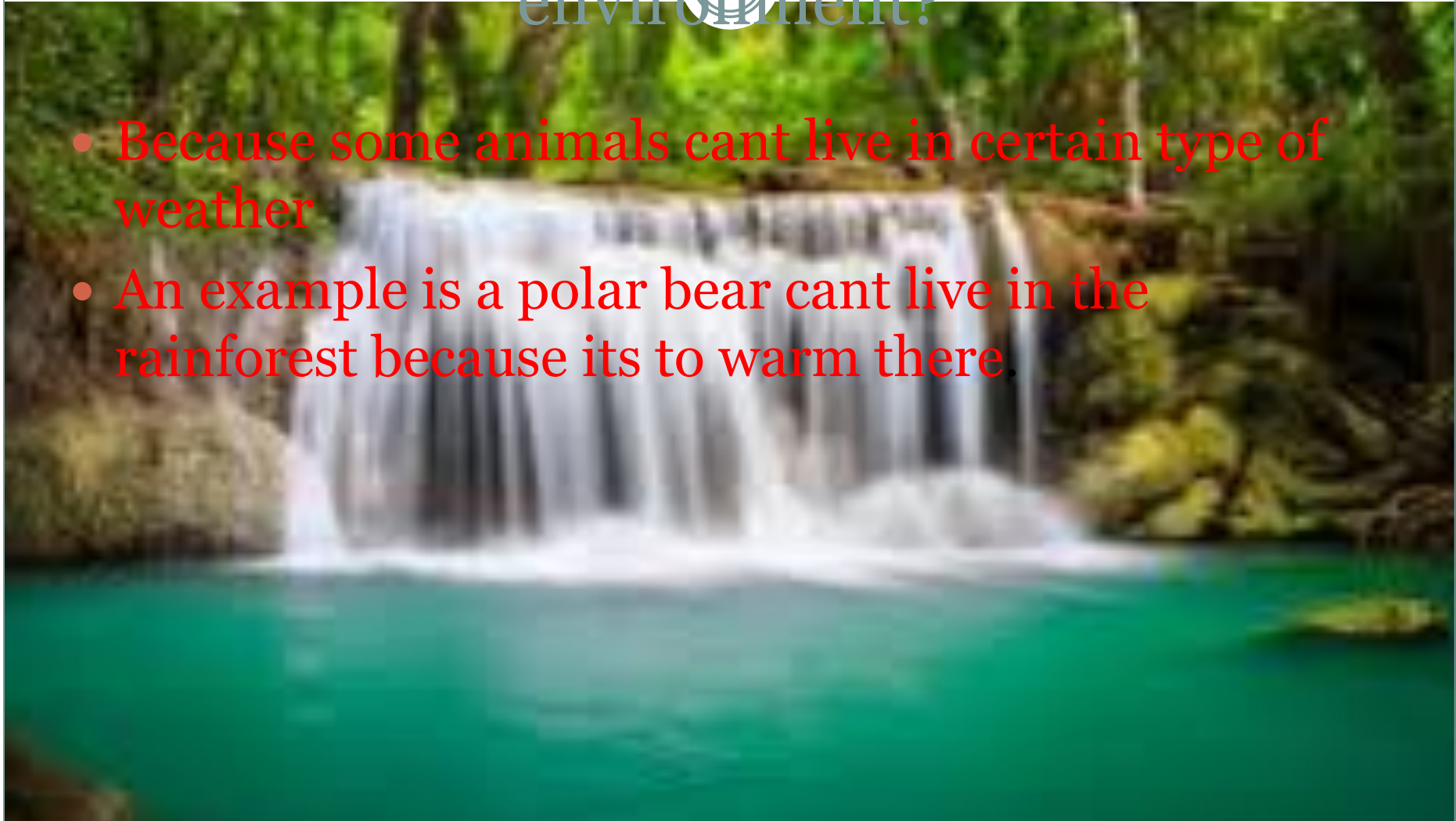


- It remains 20 degrees to 25 degrees all year
- It remains warm and free of frost, always wet
- 2,000 to 10,000 millimeters of rain per year
- And it has no seasons



How does the weather determine what kinds of organisms live in the environment?

- Because some animals cant live in certain type of weather
- An example is a polar bear cant live in the rainforest because its to warm there.



What kinds of threats does the weather pose for your biome and its inhabitants?

- Drought can affect the forest by weakening the system to the point where you can't suspect other things like fire and disease.
- Cutting down trees is a threat because some animals live in those trees and because some eat leaves and they won't have anything to eat because of that.
- Fire is also a threat because it can ruin the animals' habitats and homes.

How is weather differ from the weather in your neighborhood



- It rains all the time in the rainforest.
- It is always warm.
- They don't have any seasons.



Zoologist



Animal that Live in the Rainforest



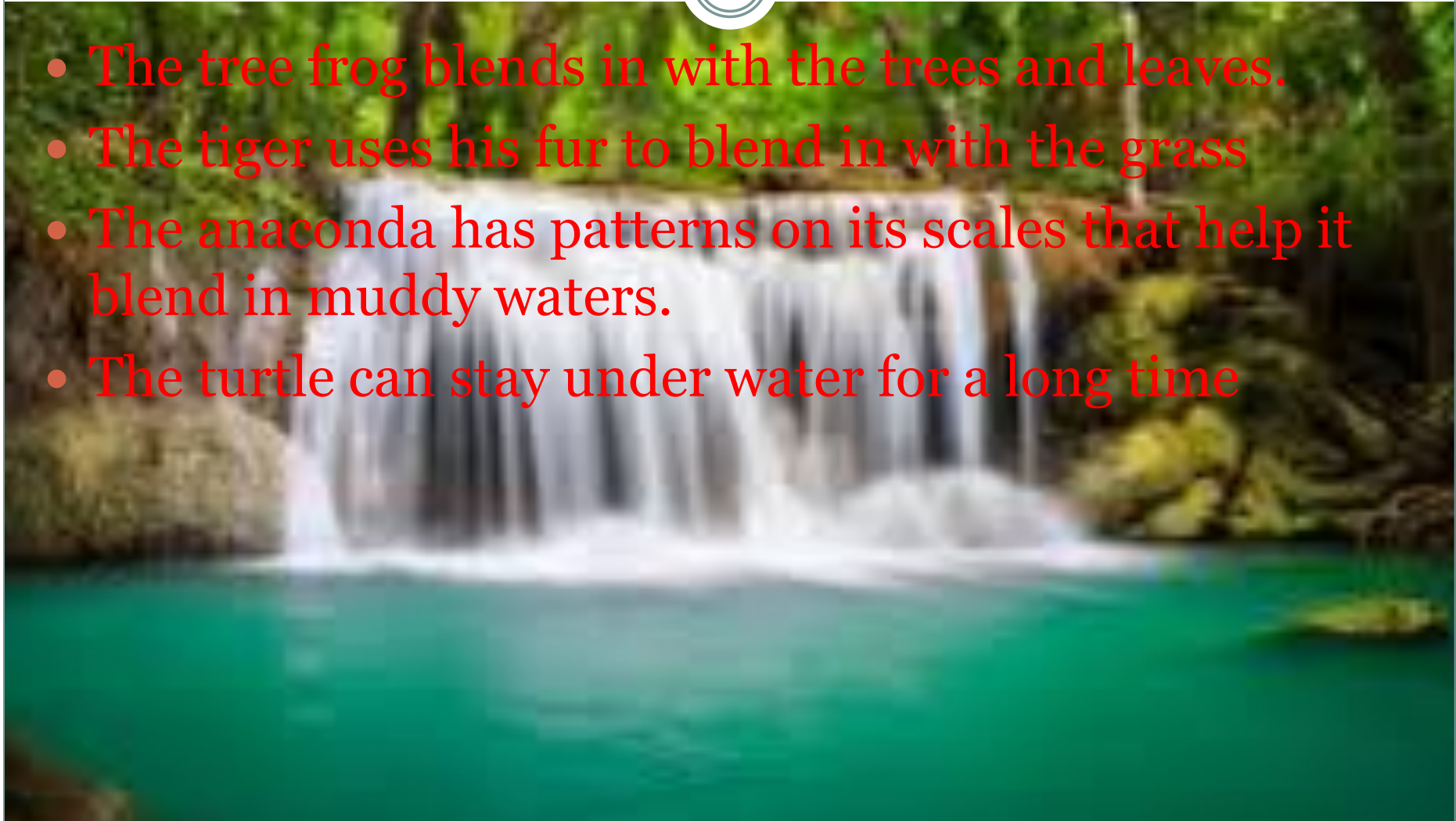
- Tree Frog
- Tiger
- Anaconda
- Turtle



Adaption of Animals in the Rainforest



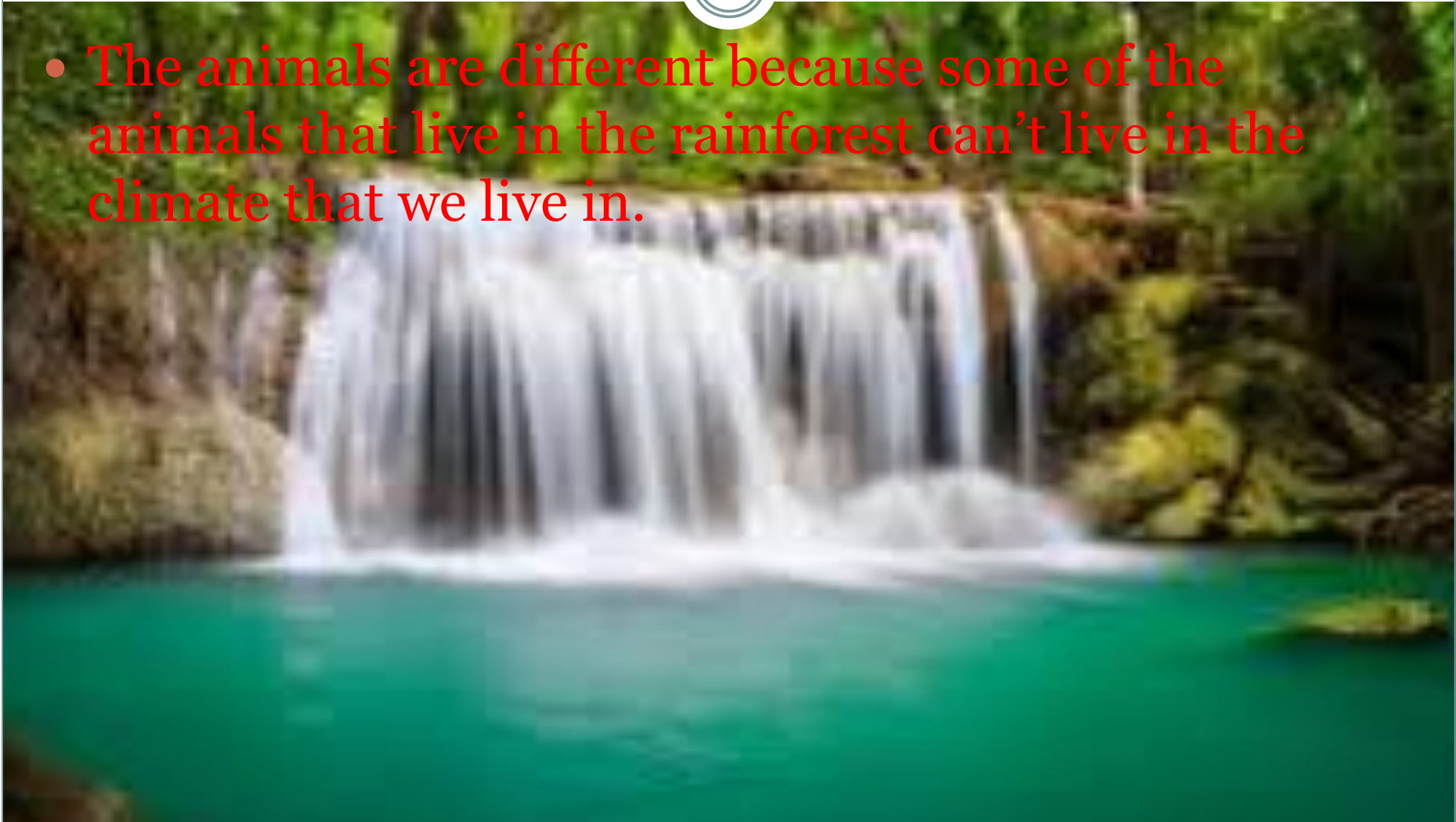
- The tree frog blends in with the trees and leaves.
- The tiger uses his fur to blend in with the grass
- The anaconda has patterns on its scales that help it blend in muddy waters.
- The turtle can stay under water for a long time



How are the animals different than the ones in your neighborhood



- The animals are different because some of the animals that live in the rainforest can't live in the climate that we live in.



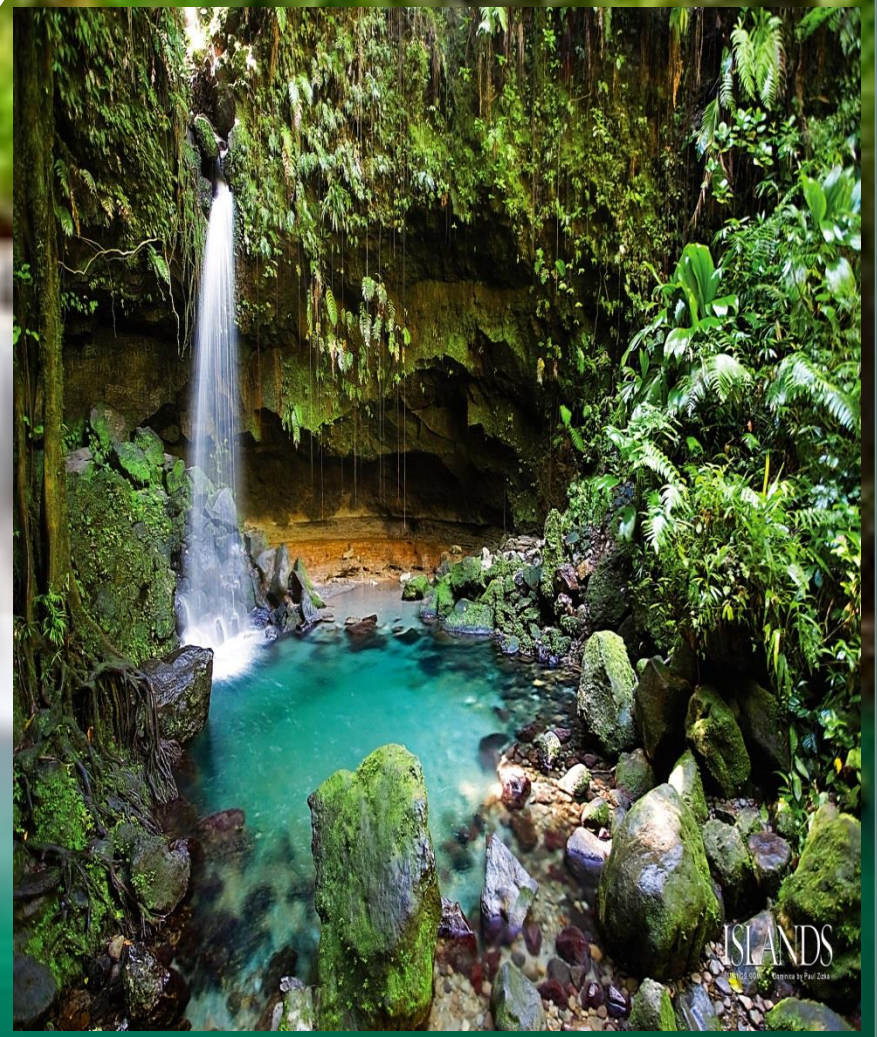
Are the animals in the rainforest important to the rainforest



- Yes, because some people that live near a rainforest sometimes depend on the meat and other food that it provides.



Close!!!!!!!



ISLANDS
© 2011 ISLANDS
Created by Paul Zick