

# Marine/Estuaries

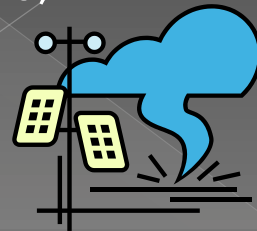
By: Cameron Boden, Hayden Garrett,  
Estavian Vickers, Isaiah Upshaw



# Meteorologist



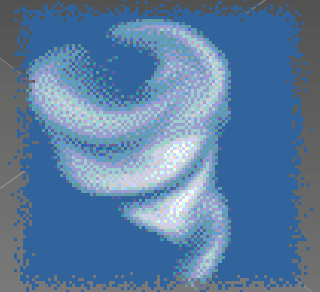
1. There are no seasons in the biome, because it lasts the whole year. This is a delineated geographic area that contains plant and animal groups.
2. The weather depends where the animals live in the marines/estuaries.
3. Many things that hurt this biome are Rip currents, tidal waves, hurricanes, tsunamis, pollution, shoreline weathering, coastal erosion, sea level change, deposition, and storm surges.
4. What makes the weather in my biome different than my neighborhood is the temperature, wind speeds, rainfall, and the types of storms that occur.



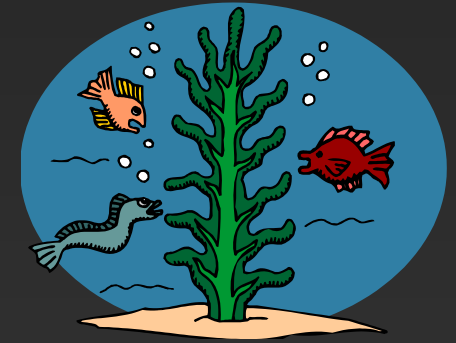
# Geologist/Sociologist



1. Biome is the ocean
2. Average temperature is 30 degrees Fahrenheit (0 degrees Celsius)
3. We must have a ship that allows us to fish because that is our only fresh source
4. We must have a back-up supply of food and water
5. Our threats are Tsunamis, Cyclones, Giant waves, and regular sea storms
6. Only salt water at our disposal



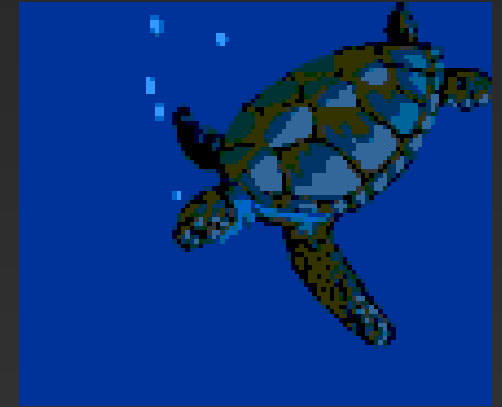
# Botanist



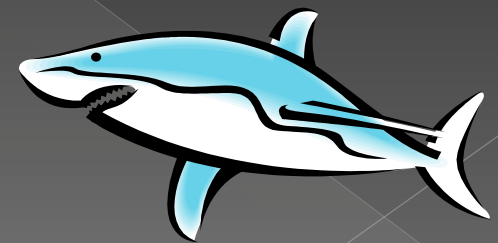
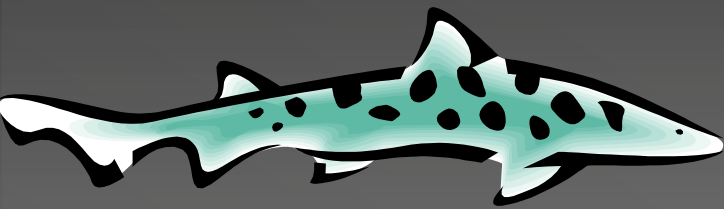
1. Water bushes, Coral, Seaweed, Plankton
2. Water, Sand, and more
3. They don't move because they are plants and their neighbors such as animals can move
4. No they are not important to humans



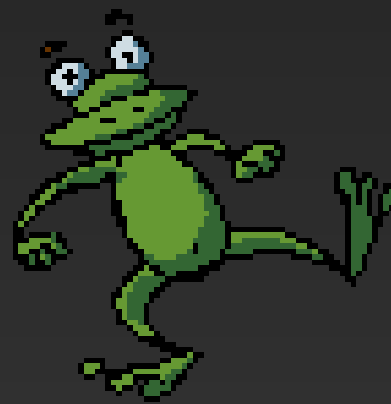
# Zoologist



1. Dolphin, Fish, Octopus, Squid
2. Camouflage, speed, Brains, and help each other defend
3. There are a lot more animals in my biome than in my neighborhood
4. Yes because they give food and keep you safe



# Citations



- ◉ <http://www.enchantedlearning.com/biomes/>
- ◉ <http://www.mbgnet.net/>
- ◉ <http://www.weather.com/>
- ◉ <http://www.earthobservatory.nasa.gov/Experiments/Biome/>
- ◉ <http://kids.nceas.ucsb.edu/biomes/index.html>



Thank You for watching

