

FRESH WATER ECOSYSTEMS

KAYLA DOSS,
ROKER

DANIEL MARTIN, TOMMY POLLACK, AND KOFI

WEATHER EFFECTS IN GEORGIA AND FLORIDA

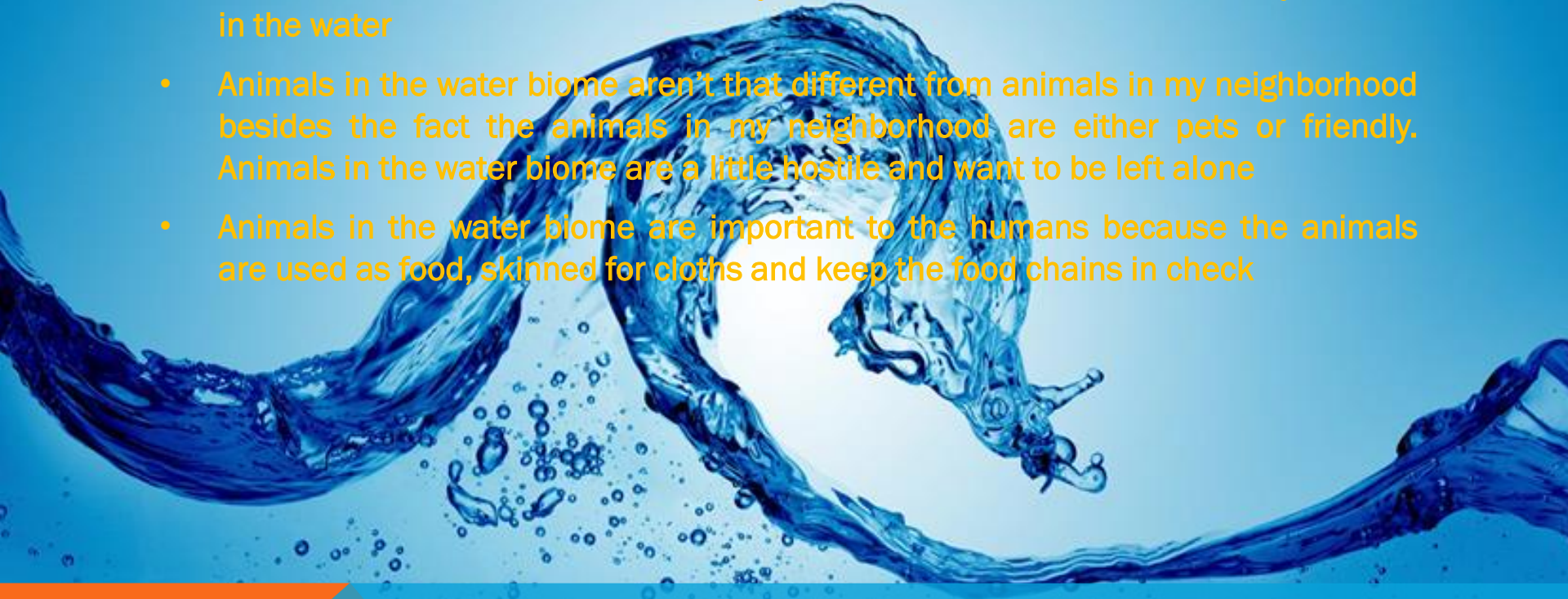
- 39c 71f is the average water temperature
- The weather in summer 75f – 100 f

Okefenokee swamp:

- Water temp gets colder when it rains
- Too much rain causes floods in businesses and homes
- Florida weather changes water between 75 and 80 degrees f

ANIMALS/ADAPTION

- Mammals, Bird, Insects, Arachnid Turtles, Frogs, Muskrats, Fish
- Fish and some turtles have the ability to breathe underwater so that they can live in the water
- Animals in the water biome aren't that different from animals in my neighborhood besides the fact the animals in my neighborhood are either pets or friendly. Animals in the water biome are a little hostile and want to be left alone
- Animals in the water biome are important to the humans because the animals are used as food, skinned for cloths and keep the food chains in check



GEOLOGIST/SOCIOLOGIST

The freshwater biome has many nutritious minerals for all of the animals and plants to thrive. Also so that the humans that live there can have good growing vegetables and certain animals to buy from markets. Freshwater is also very clean since it has no salt water and most of the time it never moves so the sediment stays on the bottom of the lake. You would still need to clean it but not as much as other sources of water.

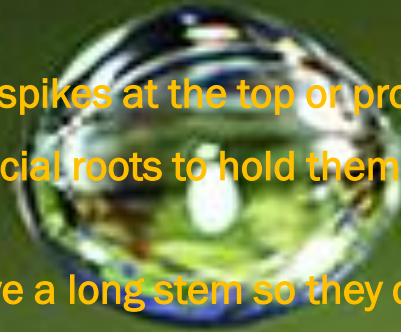
Freshwater is located in regions such as Florida, Amazon rainforest, and lakes in Russia. Freshwater places has many materials that can help the lifestyles of some people. Plants can grow faster since there is water close by. Also there are going to be many types of animals in the water such as fish.

Freshwater however is sadly being polluted a lot. We need to help our freshwater lakes, rivers, streams, ect. From being polluted and help the water we use today.



BOTANIST

- The types of plants you would see in a freshwater biome would be Spike rush, Bulrush, Pickerel weed, Cattail, and Mangrove leaves. They all have adaptations to survive.
- Spike Rush- They have spikes at the top or protection
- Bulrush- They have special roots to hold them down since they grow so tall (5-10 ft.)
- Pickerel Weed- They have a long stem so they can get more water
- Cattail- Produce seeds that float until they contact a suitable sight for growth
- Mangrove leaves- They also have seeds that float on top of the water for the same reason as the Cattail



FUN FACTS

- Fresh water is located more inland
- Swamps: soggy with lots of trees
- Marshes: treeless areas with low lying plants
- 95 million acres of wetlands remain in untied states not including Hawaii and Alaska

